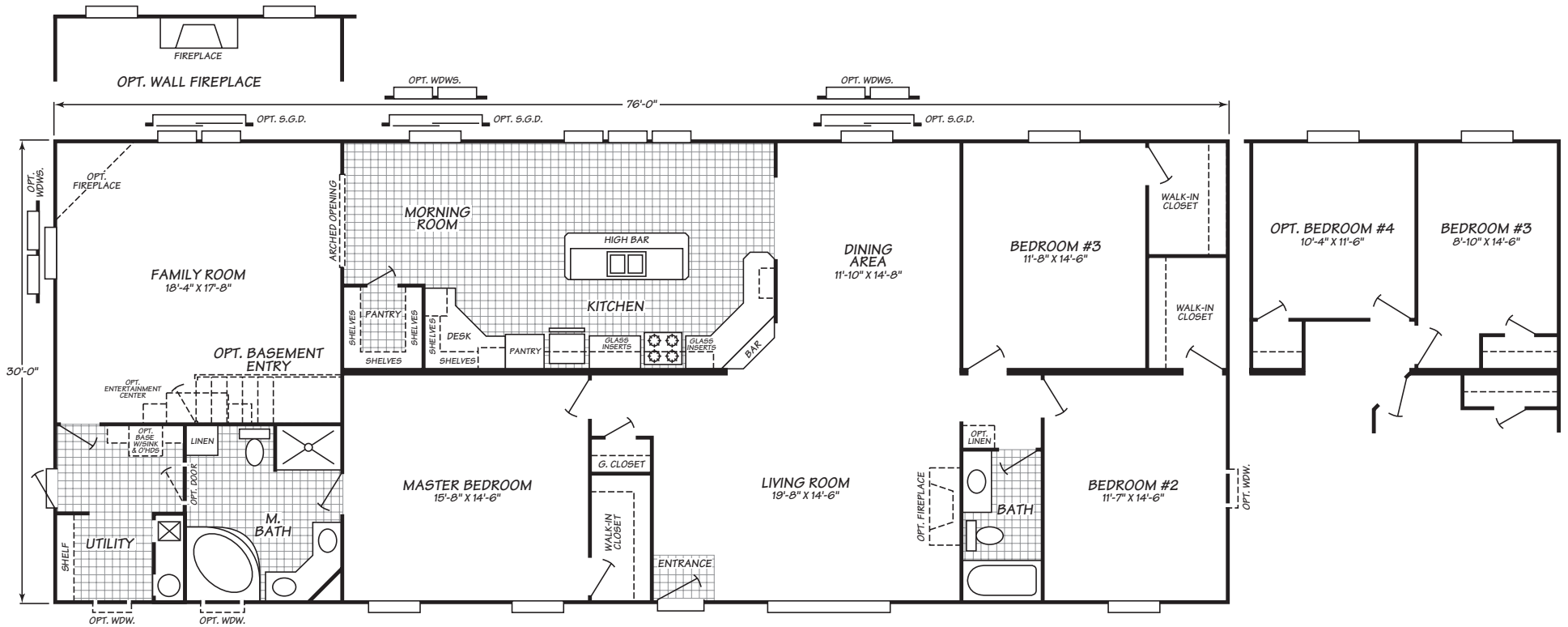




Eagle Trace Series Model 0763E

3 Bedrooms • 2 Baths • 2,280 Square Feet



Mirror Image and Flip floorplans available.
Available Timberlake Package includes unique drywall features. Features are model specific.

Fleetwood Homes reserves the right to change colors, prices, specifications, models, dimensions and materials without notice. Rendering and diagrams are meant to be representative and, in keeping with Fleetwood's policy of constant updating and improvement, may vary from the actual home. All dimensions are nominal and approximated. Square footage is measured from exterior wall to exterior wall, and is an approximate figure. Length indicated in floorplans is floor length only. The length of the hitch is not included. (Add four feet to arrive at transportable length.) Ask your retailer for specifics. PRICES AND SPECIFICATIONS SUBJECT TO CHANGE WITHOUT NOTICE OR OBLIGATION.

Interior

No-wax vinyl floors

Beautiful appearance and easy to care for

Rebond carpet pad

Heavy-duty pad extends life of carpet

Tape & texture with painted walls

Finished, textured drywall enhances home appearance-choose from wide range of paint colors (with optional timberlake package)

Vaulted ceiling throughout

creates spacious feel t/o home

Decorative glass over head light fixtures

Provides safe , full room lumination from over head

Closet Maid* vinyl coated closet shelving

Easy to clean shelving with hanger return will help keep closets organized

Mini Blinds throughout

Gives added security and privacy

Linoleum entry

Durable and easy to care for entry helps keep carpets clean

Designer valances / drapes

Add color and style to every room

Exterior

End elevations & porches

Improve views, enhance home entrance, and add functional outdoor space (available some models)

36" Steel front door

Extra-wide entryway for improved access

Marriage line seal

Provides necessary structural seal and improves energy efficiency

Shutters with raised panels

Low maintenance shutters add style and dimension to windows

Ridge vent (standard for most homes)

Provides necessary structural ventilation and improves energy efficiency

Exterior vinyl siding

Durable, low maintenance, and never needs painted

Owens Corning * composition shingles

Long lasting and low maintenance, stands up to the weather

Exterior doors with deadbolts

Increases security

Bath

32" Counter height in guest bath

More comfortable counter height

Corner bathtub (60' homes only)

Extra-large, durable, attractive, and easy to clean

No-wax vinyl floors

Floors look great with easy clean up

Power vent fans

Reduces moisture in bathroom and circulates air

Porcelain water saver toilet

Durable with water saver feature to help save on utility bills

Formica * countertops

Attractive and very durable, hot and cold resistant with easy clean up

Kitchen

Adjustable cabinet shelves

Adjust shelves to accommodate larger or smaller items

Cityscape cabinets

Spacious, durable, and appealing design-expresses a custom kitchen look

Drawer over cabinet construction

Efficient design enhances storage and keeps utensils close at hand

Hidden cabinet door hinges

Concealed hinges create a clean, uncluttered look for cabinets

Cabinet color options

Designer color options add a personal touch

Whirlpool appliances

Quality, dependability, and style-all backed by the Whirlpool warranty

Zargon drawer system

Durable, smooth to open and close

Utilities, Safety & Energy

Ventilated ClosetMaid® shelving

Keep clothing and personal items organized with easy to clean shelving

Contractor locks

Add security to exterior doors

Fiberglass insulated in-floor duct crossovers

Efficient, modern, and quiet heating system

Vinyl tile entry way

Easy to care for, durable vinyl stands up to wear in this high traffic area and protects carpets

Owens Corning® insulation

Increase energy efficiency with high performance insulation from a trusted brand

Quest PEX plumbing

Resists freezing and features high quality brass fittings

Options

Tape & Texture with painted walls

Finished, textured drywall enhances home appearance-choose from a wide range of paint colors

Ceiling Fan

Improves air circulation to stay warmer in the winter and cooler in summer

Sliding Glass Door

Opens living area and provides additional natural light

Upgrade Carpet

Provides luxurious, heavier weight carpet in designer colors

Total Electric

Provides you with electric range, electric furnace and 200 amp to meet your needs

Basement entry

Provides interior basement access