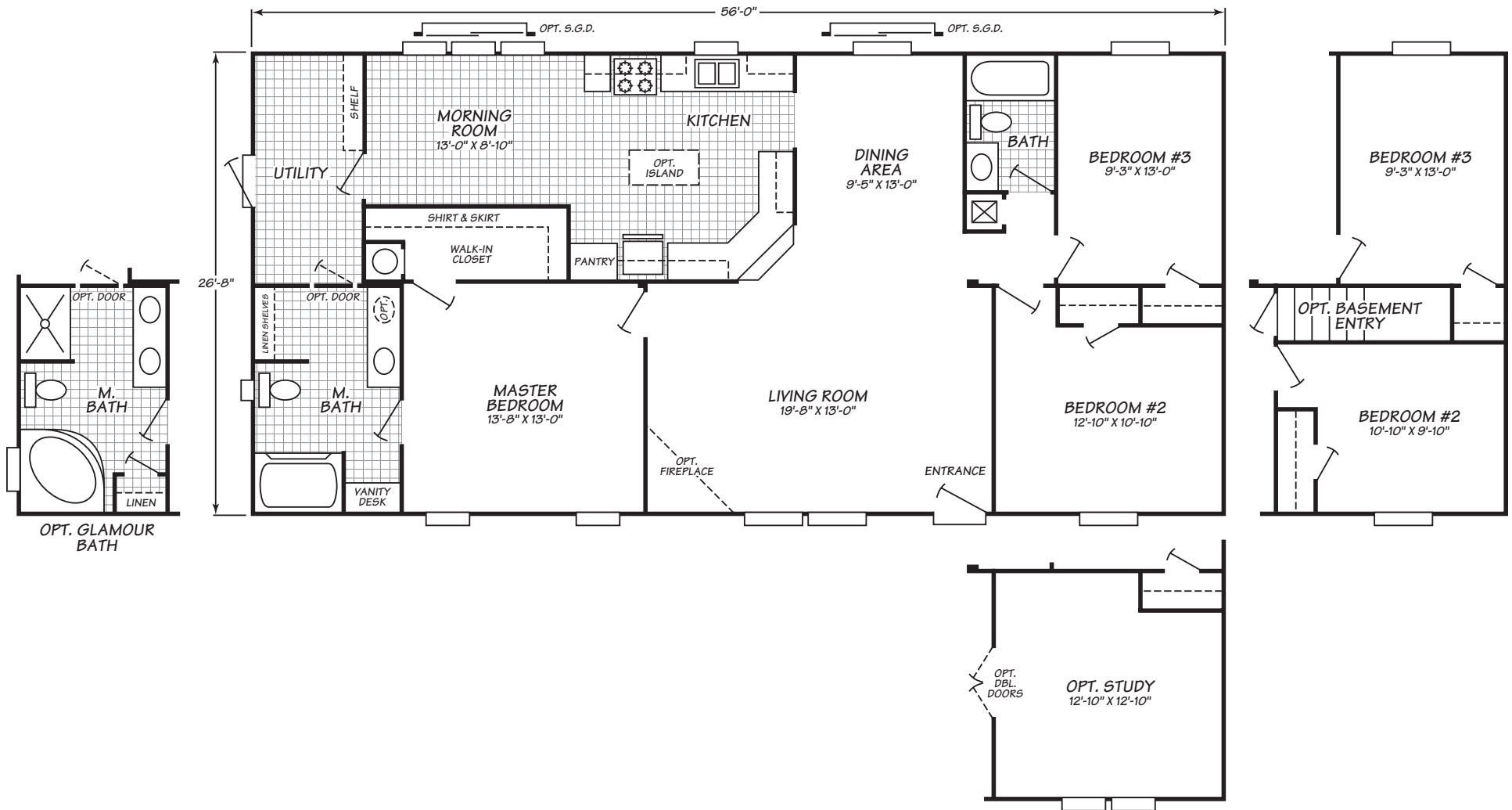


# Meadowbrook Series Model 4563T

3 Bedrooms • 2 Baths • 1,492 Square Feet



Windows shown reflect standard aluminum windows. Selection of optional thermal pane (vinyl) windows may affect the size and number of windows.

Fleetwood Homes reserves the right to change colors, prices, specifications, models, dimensions and materials without notice. Rendering and diagrams are meant to be representative and, in keeping with Fleetwood's policy of constant updating and improvement, may vary from the actual home. All dimensions are nominal and approximated. Square footage is measured from exterior wall to exterior wall, and is an approximate figure. Length indicated in floorplans is floor length only. The length of the hitch is not included. (Add four feet to arrive at transportable length.) Ask your retailer for specifics. PRICES AND SPECIFICATIONS SUBJECT TO CHANGE WITHOUT NOTICE OR OBLIGATION.

**Interior**

**Vaulted ceilings** Create spacious rooms and enhance a custom home look

**Embossed six panel white interior doors with nickel hardware** Contemporary and stylish, creates a designer home look

**Decorative glass light fixtures** Durable and attractive, adds an appealing detail to room lighting

**Designer drapes** Add color and style to every room

**Custom decors** Allow you to choose the color scheme that best suits your style

**Trackless carpet in all living areas** High performance, trackless, and long wearing

**Rebond carpet pad** Heavy-duty pad extends life of carpet

**Ventilated vinyl coated closet shelving** Keep clothing and personal items organized with easy to clean shelving

**Vinyl gypsum wall panels** Attractive, easy to clean, and low maintenance

**Mini Blinds** Provide privacy and style to the windows

**Exterior**

**2"x4" Exterior wall frames, 16" on center** Superior structural strength

**2"x6" Floor joists, 16" on center (24' & 28' homes)** Stable, strong foundation for home structure

**2"x8" Floor joists, 16" on center (32' homes)** Stable, strong foundation for home structure

**3/12 Roof pitch** Greater pitch projects a custom home look

**Composition shingle roof** Long-lasting and low maintenance, stands up to harsh weather

**Floor decking glued & mechanically fastened to floor joists** Structurally strong, warp resistant flooring is glued and fastened for maximum stability

**Exterior door with deadbolt** Greater security

**Vinyl shutters** Low maintenance shutters add style and dimension to windows

**Exterior vinyl siding** Durable, low maintenance, and never needs painting

**Aluminum storm windows** Protects windows from harsh weather conditions and helps lower power bills

**Bath**

**Glamour bath package (most homes)** The ultimate luxury-includes a deep bathtub, separate 48" shower, double sinks, deluxe lighting, and additional storage

**Hollywood lights in master bath** Provide both style and light to the master bath

**Laminate countertops** Long-lasting, attractive, and easy to clean

**Porcelain water saver toilets** Durable and fashionable, water saver feature helps save on utility bills

**60" tub/shower combination - guest bath** Provides the extra space you need

**No-wax vinyl floors** Makes cleaning up in the baths easy

**Power vent fans** Help keep the air fresh and the moisture out

**CPVC supply lines** Both resilient and easy to repair

**Drawer bank** Convenient storage for the little things in master baths

**Kitchen**

**30" Overhead cabinets** Convenient, accessible storage for kitchen equipment & supplies

**Hidden cabinet door hinges** Concealed hinges create a clean, uncluttered look for cabinets

**Whirlpool appliances** Provide name-brand dependability

**Stainless steel kitchen sink** Durable, stain resistant sink is chip proof

**No-wax vinyl floors** Beautiful appearance and easy to care for

**Lined overhead cabinets** Easy to clean and good looking

**Full center shelf in base cabinets** Provide more storage and less wasted space

**Cityscape cabinets (most models)** Add a distinctive designer's touch to any kitchen

**Pantry - many models** Gives you all the extra storage you're looking for

**Framed cabinet doors with nickel finish drawer pulls** Long-lasting and beautiful with contemporary finish hardware, enriches the appearance of kitchen cabinets

**Utilities, Safety & Energy**

**200 Amp electrical panel box** Ample capacity for household power needs

**Exterior electric outlets** Convenient power access for outdoor tools and Christmas lights

**Shut-off valves** Quickly shut off water for repairs or in an emergency

**Smoke detectors with battery back-up** Protect every resident from fire danger and potentially get lower insurance rates

**Frost free exterior faucet** Handy for outdoor activities and lawn care

**Exterior lights** Provide extra security and safety at each exterior door

**Safety trip receptacles in kitchens and baths** Give an extra measure of safety around sinks and commodes

**Laundry hook-ups** Save you time and money when installing washer and dryer

**Options**

**Ceiling fan** Improve air circulation to stay warmer in winter and cooler in summer

**Fiberglass bathtub & shower in guest bath** Durable, attractive, and easy to clean

**Deluxe carpet upgrade** Luxurious, heavier weight carpet in designer colors, meets all FHA specifications

**Sliding glass doors** Fill rooms with dramatic natural light and open up views

**Tape & texture with painted walls (available in three packages)** Finished, textured drywall enhances home appearance-choose from wide range of paint colors

**Deluxe Whirlpool appliances** Choose deluxe appliances to enhance the kitchen

**Whirlpool glamour tub** Add a whirlpool to your glamour bath for the ultimate in relaxation

**Thermal windows** Give an added boost to your energy package and look great

**Deluxe moldings** Dramatic addition to any room

**50 gallon water heater** Always have plenty of comforting, warm water