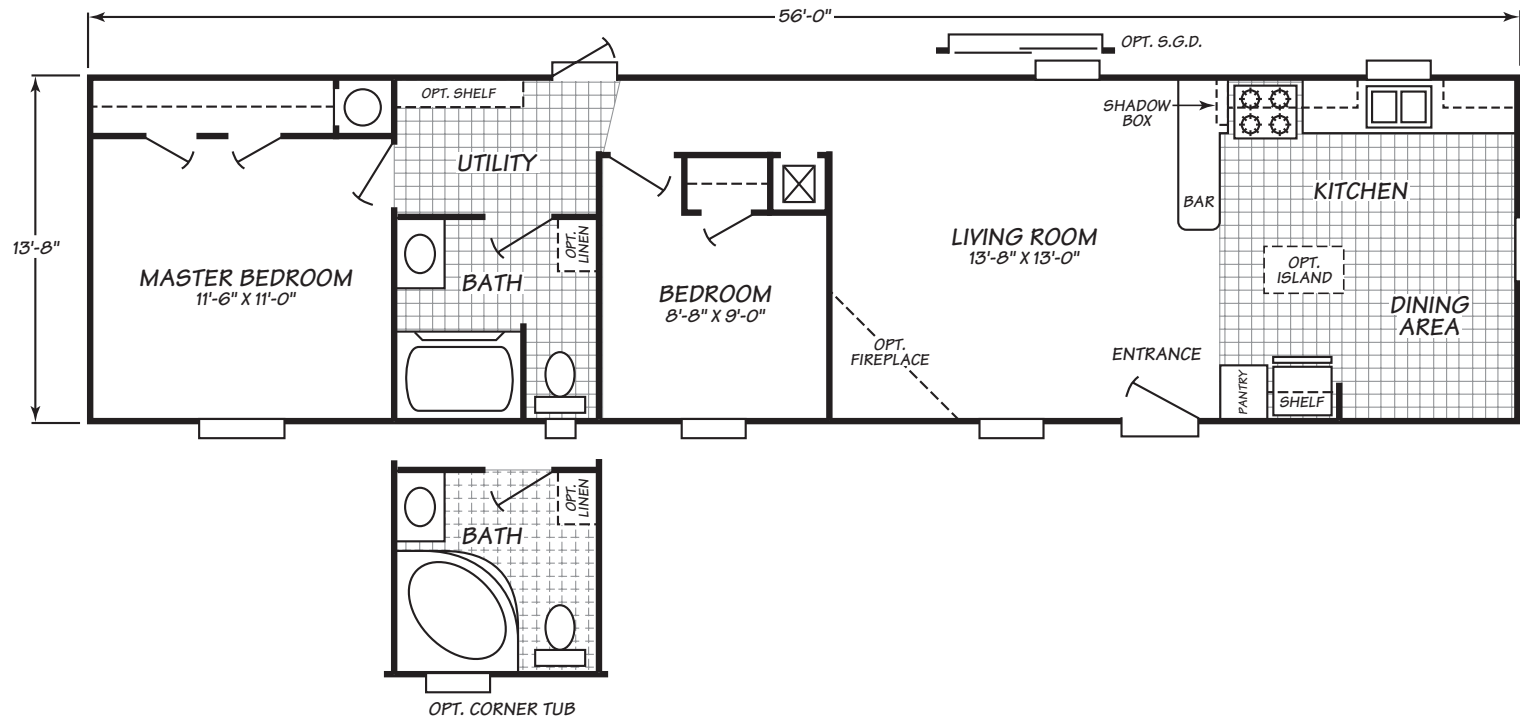




Reflection Series Model 2562R

2 Bedrooms • 1 Bath • 764 Square Feet



Windows shown reflect standard aluminum windows. Selection of optional thermal pane (vinyl) windows may affect the size and number of windows.

Fleetwood Homes reserves the right to change colors, prices, specifications, models, dimensions and materials without notice. Rendering and diagrams are meant to be representative and, in keeping with Fleetwood's policy of constant updating and improvement, may vary from the actual home. All dimensions are nominal and approximated. Square footage is measured from exterior wall to exterior wall, and is an approximate figure. Length indicated in floorplans is floor length only. The length of the hitch is not included. (Add four feet to arrive at transportable length.) Ask your retailer for specifics. PRICES AND SPECIFICATIONS SUBJECT TO CHANGE WITHOUT NOTICE OR OBLIGATION.

Interior

Vaulted ceilings Create spacious rooms and enhance a custom home look

Embossed six panel white interior doors with nickel hardware
Contemporary and stylish, creates a designer home look

Decorative glass light fixtures Durable and attractive, adds an appealing detail to room lighting

Custom decors Allow you to choose the color scheme that best suits your style

Trackless carpet in all living areas High performance, trackless, and long wearing

Rebond carpet pad
Heavy-duty pad extends life of carpet

Ventilated vinyl coated closet shelving Keep clothing and personal items organized with easy to clean shelving

Vinyl gypsum wall panels Attractive, easy to clean, and low maintenance

Mini Blinds Provide privacy and style to the windows

Exterior

2"x8" Floor joists, 16" on center (16' homes)
Stable, strong foundation for home structure

2"x6" Floor joists, 16" on center (14' homes)
Stable, strong foundation for home structure

Floor decking glued & mechanically fastened to floor joists Structurally strong, warp resistant flooring is glued and fastened for maximum stability

Exterior door with deadbolt Greater security

Aluminum storm windows Protects windows from harsh weather conditions and helps lower power bills

Bath

Glamour bath package (most homes) The ultimate luxury-includes a deep bathtub, separate 48" shower, double sinks, deluxe lighting, and additional storage

Hollywood lights in master bath Provide both style and light to the master bath

Laminate countertops Long-lasting, attractive, and easy to clean

Porcelain water saver toilets Durable and fashionable, water saver feature helps save on utility bills

No-wax vinyl floors Makes cleaning up in the baths easy

Power vent fans Help keep the air fresh and the moisture out

CPVC supply lines Both resilient and easy to repair

Drawer bank Convenient storage for the little things in master baths

Kitchen

30" Overhead cabinets Convenient, accessible storage for kitchen equipment & supplies

Hidden cabinet door hinges Concealed hinges create a clean, uncluttered look for cabinets

Whirlpool appliances Provide name-brand dependability

Stainless steel kitchen sink Durable, stain resistant sink is chip proof

No-wax vinyl floors Beautiful appearance and easy to care for

Full center shelf in base cabinets Provide more storage and less wasted space

Pantry - many models Gives you all the extra storage you're looking for

Drawer bank Handy storage for most often used kitchen tools

Framed cabinet doors with nickel finish drawer pulls Long-lasting and beautiful with contemporary finish hardware, enriches the appearance of kitchen cabinets

Utilities, Safety & Energy

200 Amp electrical panel box Ample capacity for household power needs

Exterior electric outlets Convenient power access for outdoor tools and Christmas lights

Shut-off valves Quickly shut off water for repairs or in an emergency

Smoke detectors with battery back-up Protect every resident from fire danger and potentially get lower insurance rates

Exterior lights Provide extra security and safety at each exterior door

Safety trip receptacles in kitchens and baths Give an extra measure of safety around sinks and commodes

Laundry hook-ups Save you time and money when installing washer and dryer

Options

Ceiling fan Improve air circulation to stay warmer in winter and cooler in summer

Fiberglass bathtub & shower in guest bath Durable, attractive, and easy to clean

Deluxe carpet upgrade Luxurious, heavier weight carpet in designer colors, meets all FHA specifications

Sliding glass doors Fill rooms with dramatic natural light and open up views

Deluxe Whirlpool appliances Choose deluxe appliances to enhance the kitchen

Whirlpool glamour tub Add a whirlpool to your glamour bath for the ultimate in relaxation

Thermal windows Give an added boost to your energy package and look great

Deluxe moldings Dramatic addition to any room

Utility overhead cabinet with shelf Additional convenient storage

Fleetwood Homes reserves the right to change colors, prices, specifications, models, dimensions and materials without notice. Rendering and diagrams are meant to be representative and, in keeping with Fleetwood's policy of constant updating and improvement, may vary from the actual home. All dimensions are nominal and approximated. Square footage is measured from exterior wall to exterior wall, and is an approximate figure. Length indicated in floorplans is floor length only. The length of the hitch is not included. (Add four feet to arrive at transportable length.) Ask your retailer for specifics. PRICES AND SPECIFICATIONS SUBJECT TO CHANGE WITHOUT NOTICE OR OBLIGATION.