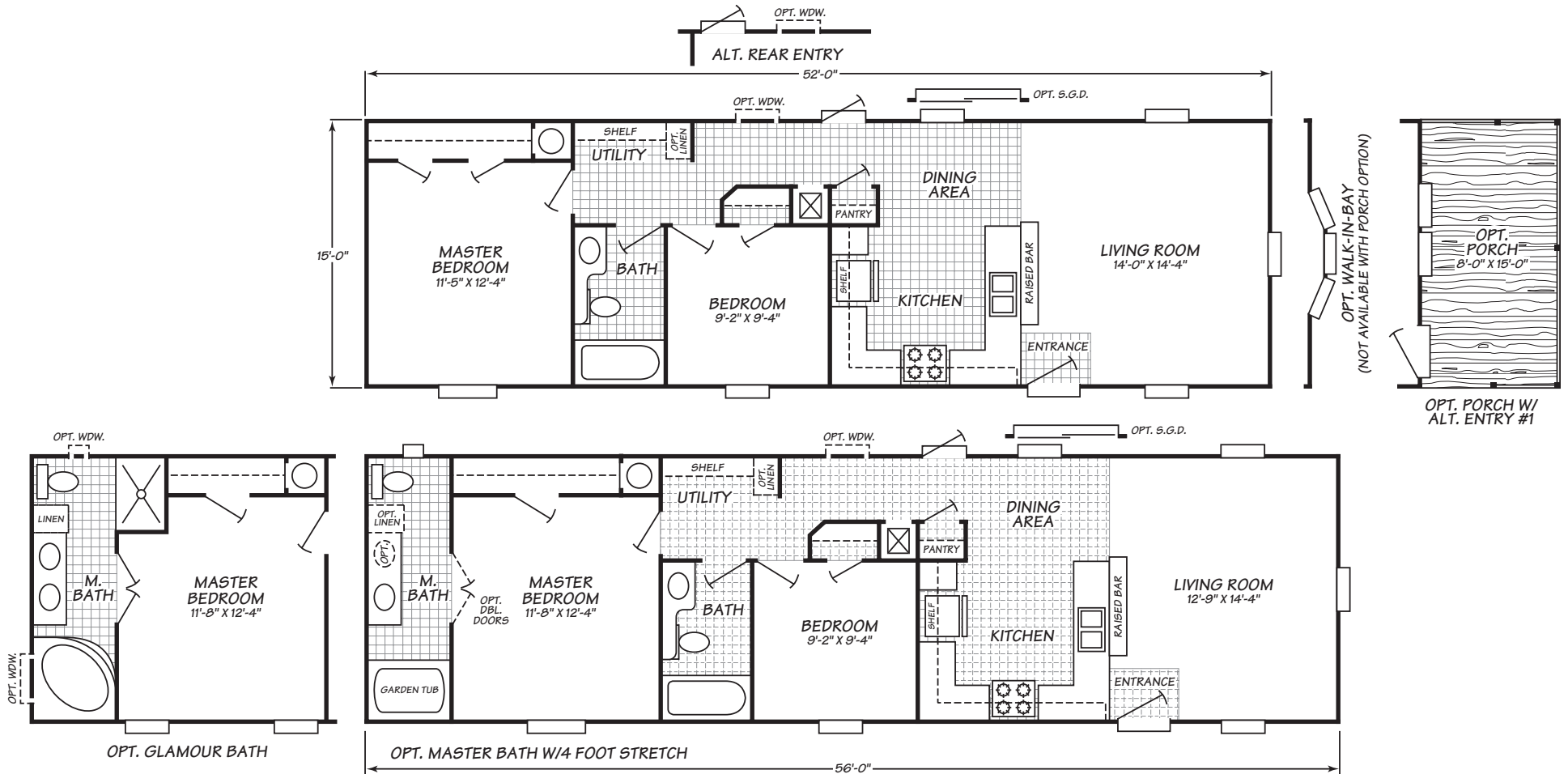


Westfield Series Model 6522W

2 Bedrooms • 1 Bath • 780 Square Feet



Windows shown reflect standard aluminum windows. Selection of optional thermal pane (vinyl) windows may affect the size and number of windows.

Fleetwood Homes reserves the right to change colors, prices, specifications, models, dimensions and materials without notice. Rendering and diagrams are meant to be representative and, in keeping with Fleetwood's policy of constant updating and improvement, may vary from the actual home. All dimensions are nominal and approximated. Square footage is measured from exterior wall to exterior wall, and is an approximate figure. Length indicated in floorplans is floor length only. The length of the hitch is not included. (Add four feet to arrive at transportable length.) Ask your retailer for specifics. PRICES AND SPECIFICATIONS SUBJECT TO CHANGE WITHOUT NOTICE OR OBLIGATION.

Interior

- No-wax vinyl floors**
Beautiful appearance and easy to care for
- Rebond carpet pad**
Heavy-duty pad extends life of carpet
- Decorative glass over head light fixtures**
Provides safe, full room lumination from over head
- Closet Maid* vinyl coated closet shelving**
Easy to clean shelving with hanger return will help keep closets organized
- Mini Blinds throughout**
Gives added security and privacy
- Linoleum entry** Durable and easy to care for entry helps keep carpets clean
- Designer valances / drapes** Add color and style to every room

Exterior

- End elevations & porches** Improve views, enhance home entrance, and add functional outdoor space (available some models)
- 36" Steel front door**
Extra-wide entryway for improved access
- Shutters with raised panels** Low maintenance shutters add style and dimension to windows
- Exterior vinyl siding**
Durable, low maintenance, and never needs painted
- Owens Corning * composition shingles**
Long lasting and low maintenance, stands up to the weather
- Exterior doors with deadbolts** Increases security

Bath

- 32" Counter height in guest bath** More comfortable counter height
- No-wax vinyl floors**
Floors look great with easy clean up
- Power vent fans** Reduces moisture in bathroom and circulates air
- Porcelain water saver toilet** Durable with water saver feature to help save on utility bills
- Formica * countertops**
Attractive and very durable, hot and cold resistant with easy clean up

Kitchen

- Adjustable cabinet shelves** Adjust shelves to accommodate larger or smaller items
- Cityscape cabinets**
Spacious, durable, and appealing design-expresses a custom kitchen look
- Drawer over cabinet construction** Efficient design enhances storage and keeps utensils close at hand
- Hidden cabinet door hinges** Concealed hinges create a clean, uncluttered look for cabinets
- Cabinet color options**
Designer color options add a personal touch
- Whirlpool appliances**
Quality, dependability, and style-all backed by the Whirlpool warranty
- Zargon drawer system**
Durable, smooth to open and close

Utilities, Safety & Energy

- Ventilated ClosetMaid® shelving** Keep clothing and personal items organized with easy to clean shelving
- Contractor locks** Add security to exterior doors
- Vinyl tile entry way** Easy to care for, durable vinyl stands up to wear in this high traffic area and protects carpets
- Owens Corning® insulation** Increase energy efficiency with high performance insulation from a trusted brand
- Quest PEX plumbing**
Resists freezing and features high quality brass fittings

Options

- 2x6 Sidewalls with upgraded insulation**
provides strength and extra insulation value to home
- Ceiling Fan** Improves air circulation to stay warmer in the winter and cooler in summer
- Sliding Glass Door** Opens living area and provides additional natural light
- Thermal Windows** Easy to clean with tilt-in feature
- Upgrade Carpet** Provides luxurious, heavier weight carpet in designer colors
- 60" tub/shower in guest bath** Durable, attractive, and easy to clean
- Total Electric** Provides you with electric range, electric furnace and 200 amp to meet your needs